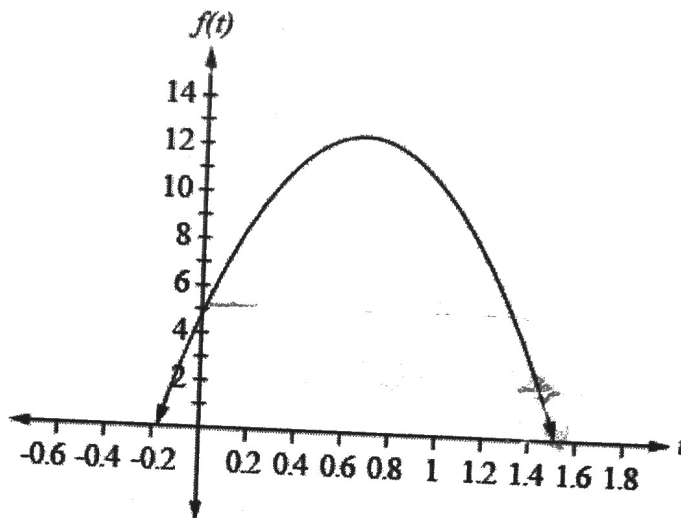


## Mathematics Algebra I Benchmark Assessment

- 16 At baseball practice, Alex pitched a ball that was caught by his coach. He threw the ball from a height of 4.8 feet, and the coach caught the ball at a height of 2 feet. The height,  $h$ , of the baseball  $t$  seconds after it was pitched can be represented by the equation  $f(t) = -16t^2 + 22t + 4.8$ . Alex graphs the function below.



Which of the following statements is true?

- (A) Alex's graph represents his pitch because the domain is  $-0.19 \leq t \leq 1.57$ .
- (B) Alex's graph does not represent his pitch because the domain is  $0 \leq t \leq 1.49$ .
- (C) Alex's graph does not represent his pitch because the domain is  $2 \leq t \leq 4.8$ .
- (D) Alex's graph represents his pitch because the domain is  $-0.12 \leq t \leq 1.49$ .