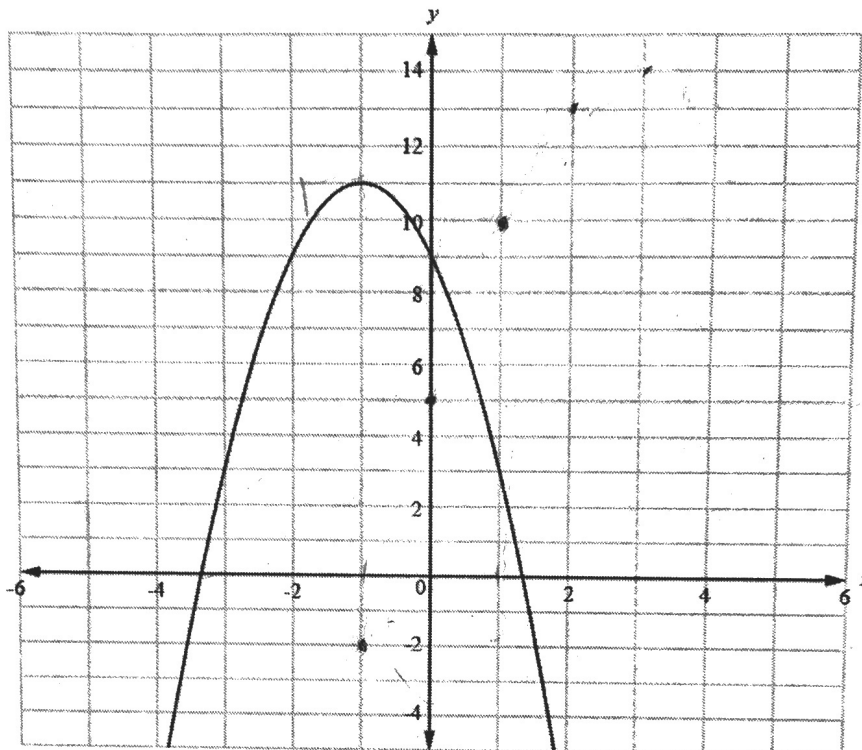


Mathematics Algebra I Benchmark Assessment

29 Two quadratic functions of the form $y = ax^2 + bx + c$ are shown below.

I. Function $g(x)$ has a y -intercept of 5 and passes through the points $(-1, -2)$ and $(1, 10)$.

II. Function $h(x)$



Part A

What is the maximum of each function? Which function has the greater maximum?

Part B

Explain in words how you found the maximum of each function.